

A COMMUNITY GATHERING PLACE | ROSE MEMORIAL LIBRARY



## A COMMUNITY GATHERING PLACE | ROSE MEMORIAL LIBRARY

The Rose Memorial Library plans to create a vibrant and enlarged library facility that is open and welcoming to a wide range of users. The proposed design has been shaped by the corner site, the use of local materials, and the requirements of a contemporary library.

An open floor plan allows the collection of books, magazines, and music to flow smoothly within spaces for group work, individual study, and comfortable seating. The stacks are moved to the exterior walls to create a visual connection between spaces.

A flexible program space accommodates large and small groups and hosts large storytime audiences, community group meetings, larger events, and after-school activities.

The Project Room allows for a range of programming including messy children's programs, art programs, and cooking classes.

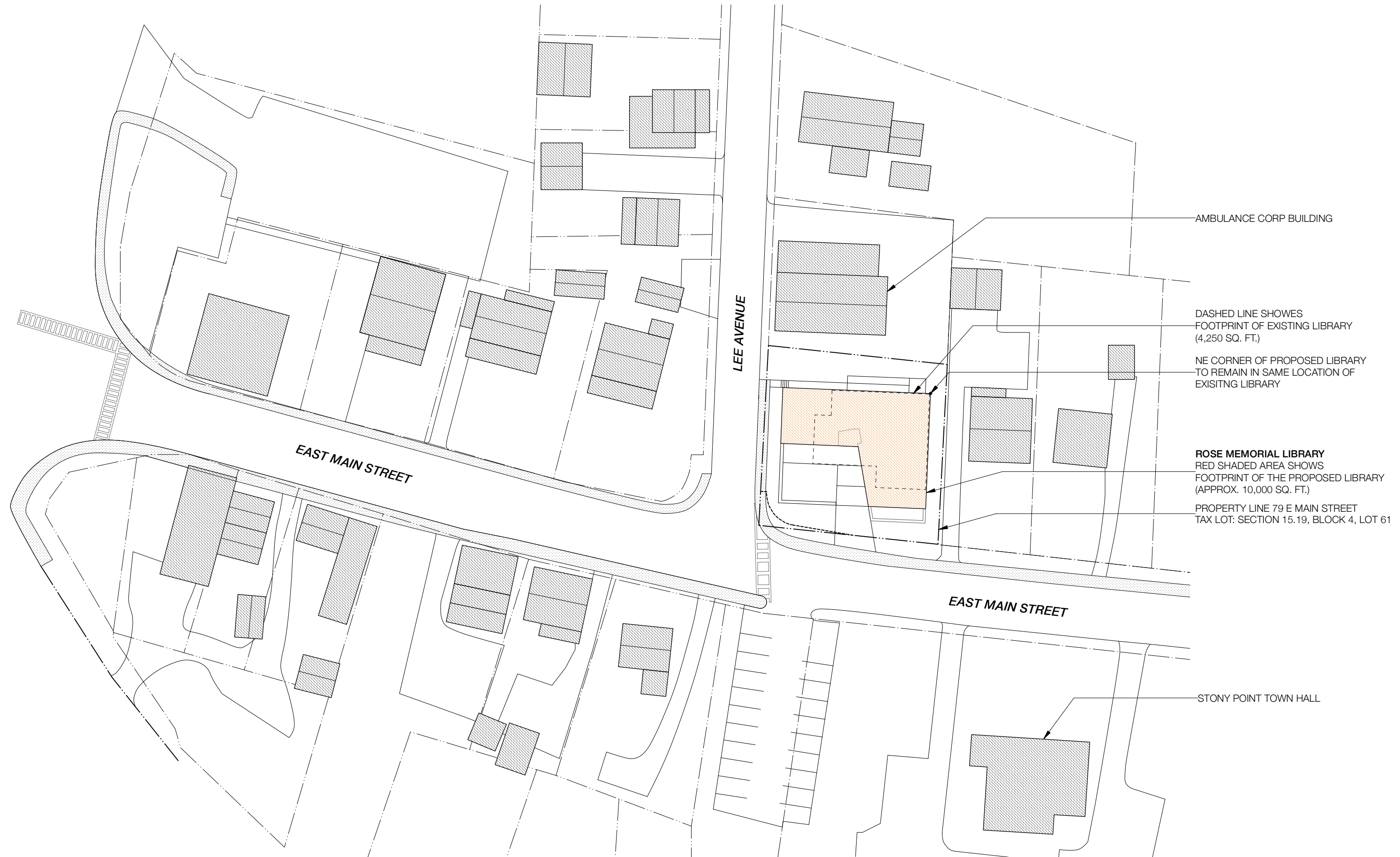
Quiet rooms are available for tutoring, small group study, business meetings, or visitors who prefer a quiet experience.

A natural, light-filled children's space provides children with opportunities for play, exploration, and learning.

A customized teen/tween area provides a welcoming and inspiring destination for young people.

Outdoor spaces for community use, a reading garden with native plants, and a pollinator garden.

Sustainability and resiliency features are designed to meet the needs of the community as they address the challenges presented by climate change and reduce operating costs.



1 SCHEMATIC AREA PLAN  
Scale: 1" = 50'-0"

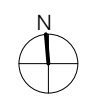


**NOTE:**  
ALL DRAWINGS ARE CONCEPTUAL FOR INFORMATION AND COMMUNITY FEEDBACK PURPOSES ONLY. THE DRAWINGS DO NOT REPRESENT THE FINAL DESIGN TO BE SUBMITTED TO THE TOWN OF STONY POINT BUILDING DEPARTMENT.

SITE PLAN BASE ON PROPERTY SURVEY BY SPARACO & YOUNGBLOOD, PLLC APRIL 20TH, 2024 WITH AN OVERLAY FROM ROCKLAND COUNTY WEBSITE.

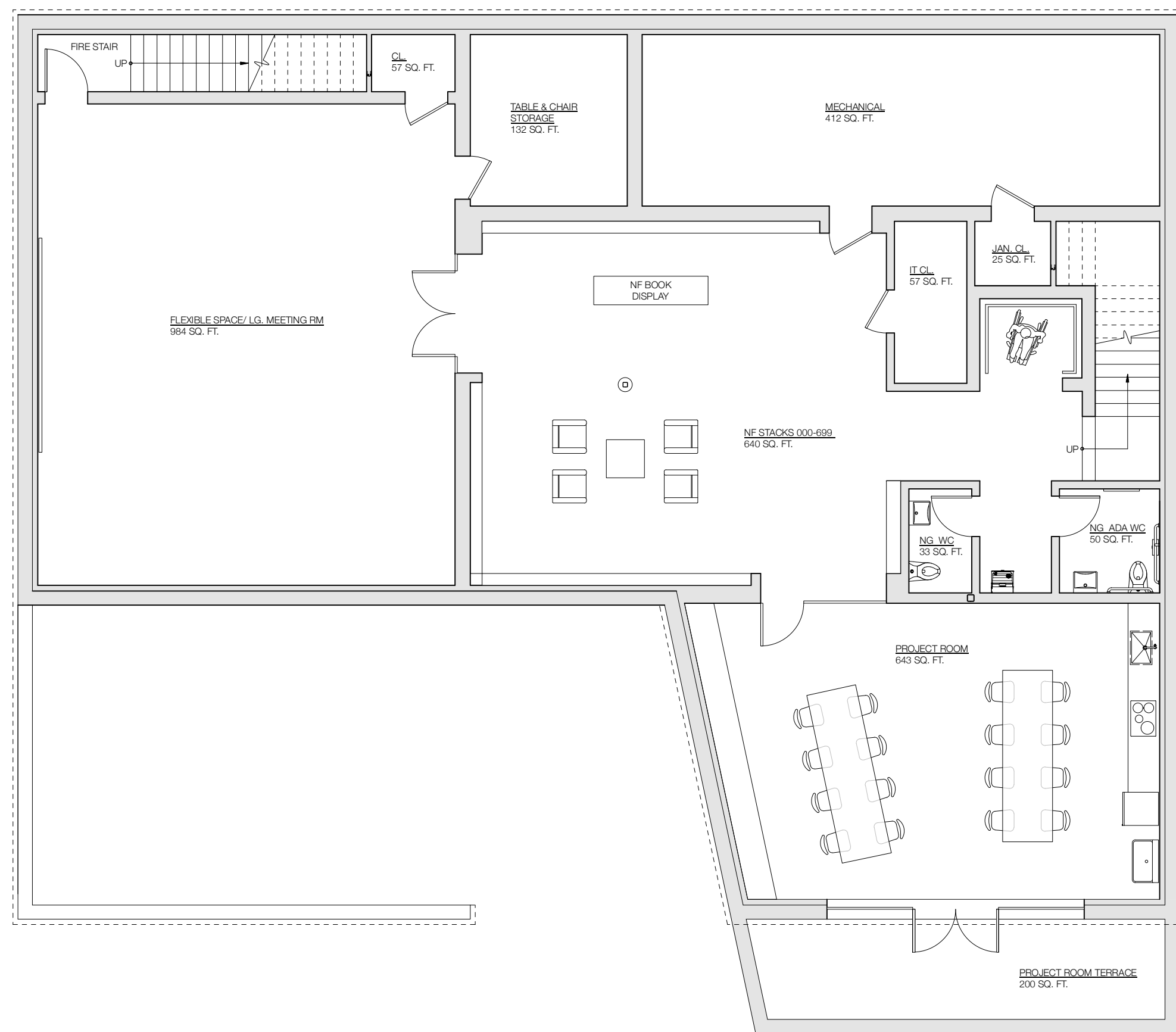


1 SCHEMATIC SITE PLAN  
Scale: 1" = 20'-0"



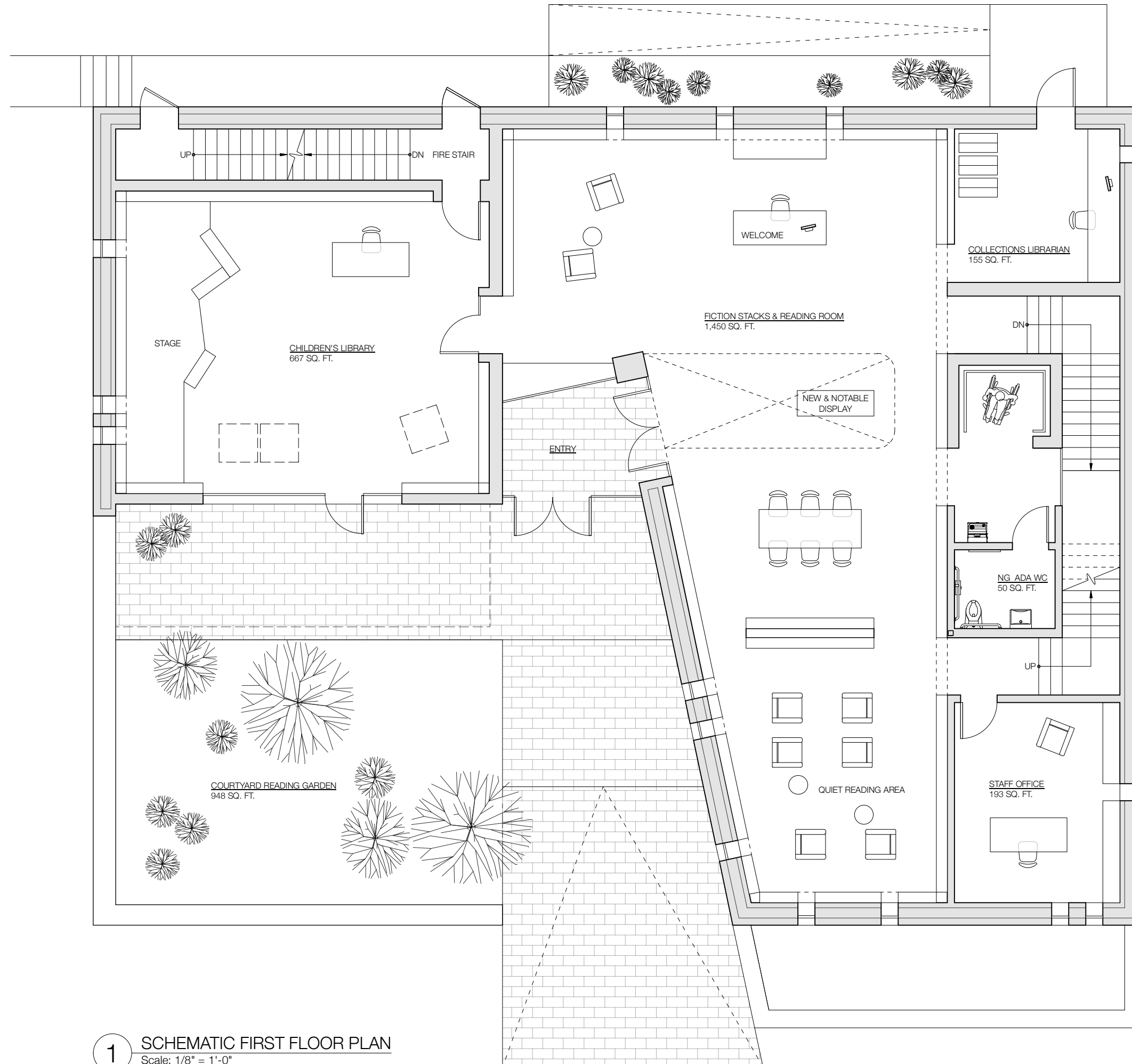
**NOTE:**  
ALL DRAWINGS ARE CONCEPTUAL FOR INFORMATION AND COMMUNITY FEEDBACK PURPOSES ONLY. THE DRAWINGS DO NOT REPRESENT THE FINAL DESIGN TO BE SUBMITTED TO THE TOWN OF STONY POINT BUILDING DEPARTMENT.

SITE PLAN BASE ON PROPERTY SURVEY BY SPARACO & YOUNGBLOOD. PLLC APRIL 20TH, 2024 WITH AN OVERLAY FROM ROCKLAND COUNTY WEBSITE.



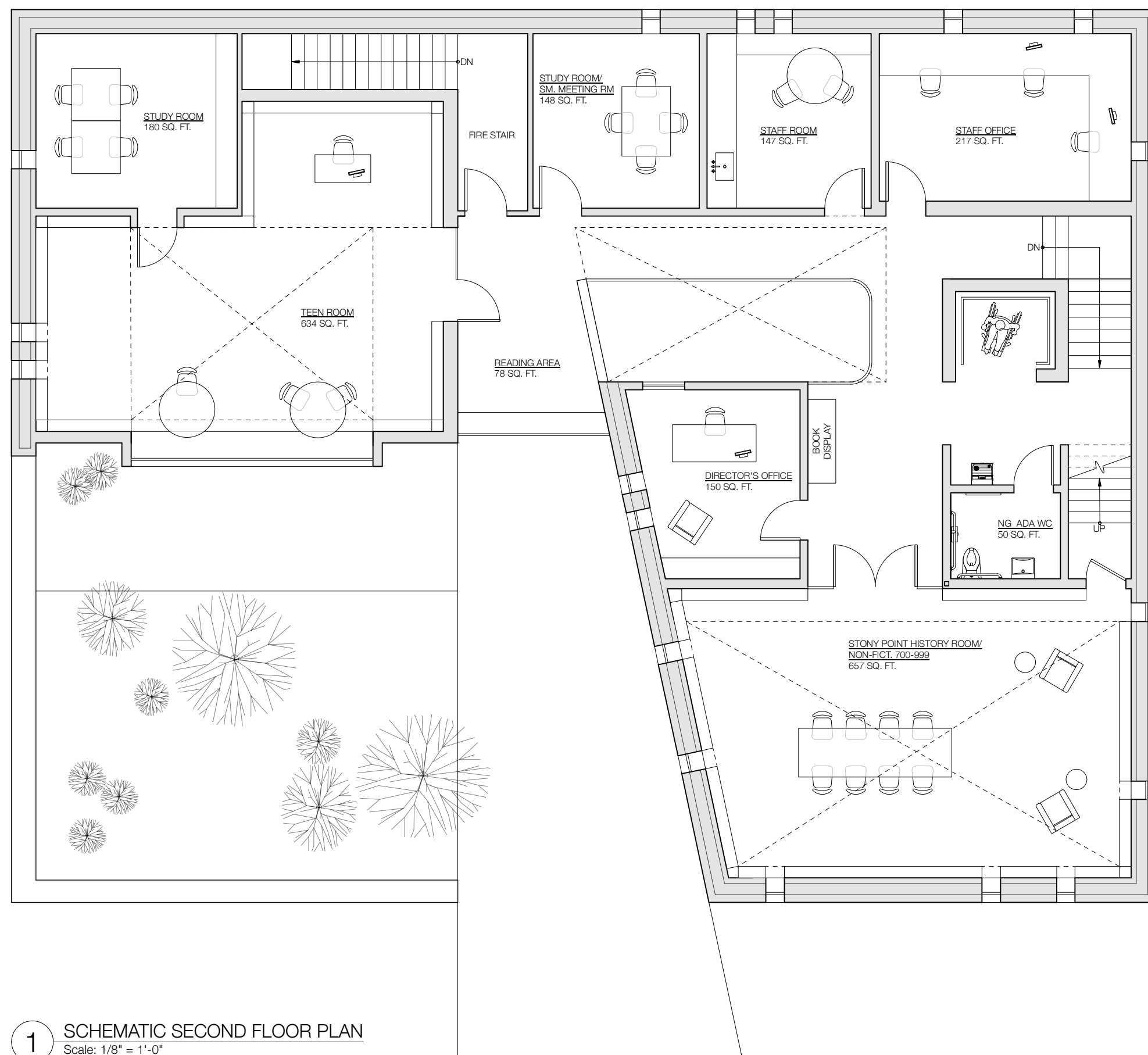
1 SCHEMATIC BASEMENT PLAN  
Scale: 1/8" = 1'-0"

**NOTE:**  
ALL DRAWINGS ARE CONCEPTUAL FOR INFORMATION AND COMMUNITY FEEDBACK PURPOSES ONLY. THE DRAWINGS DO NOT REPRESENT THE FINAL DESIGN TO BE SUBMITTED TO THE TOWN OF STONY POINT BUILDING DEPARTMENT.



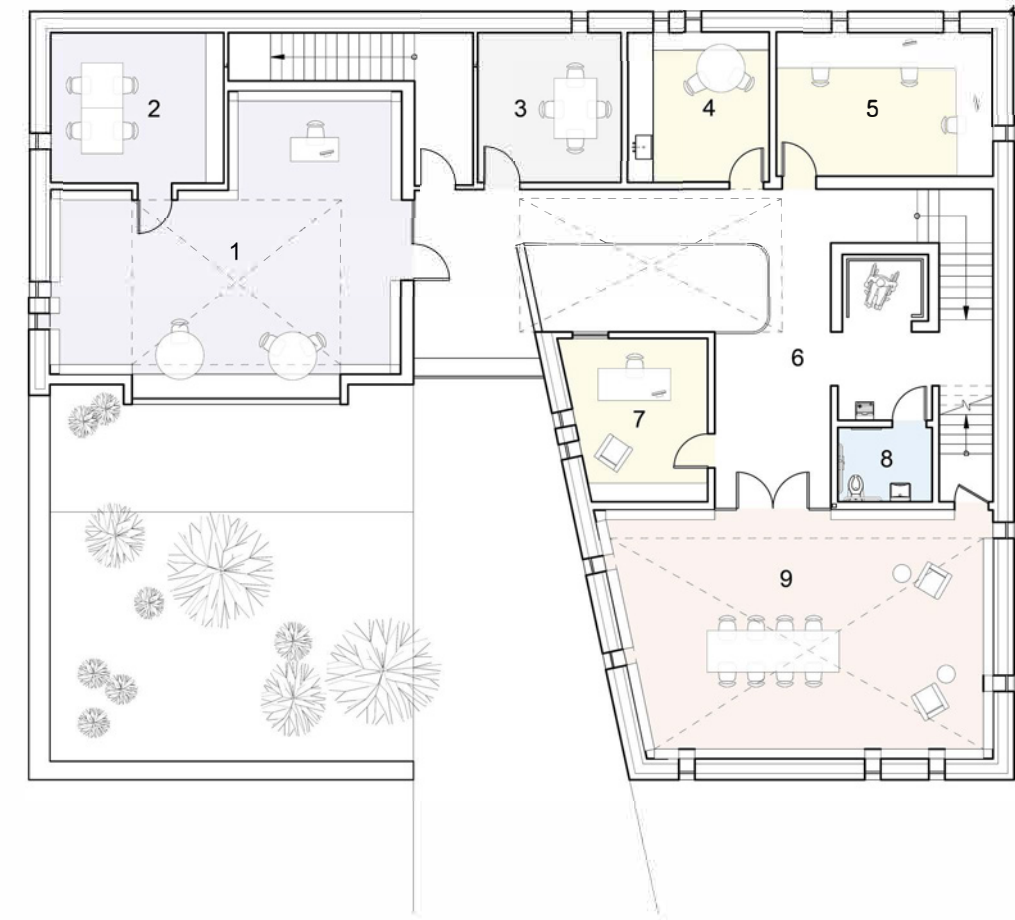
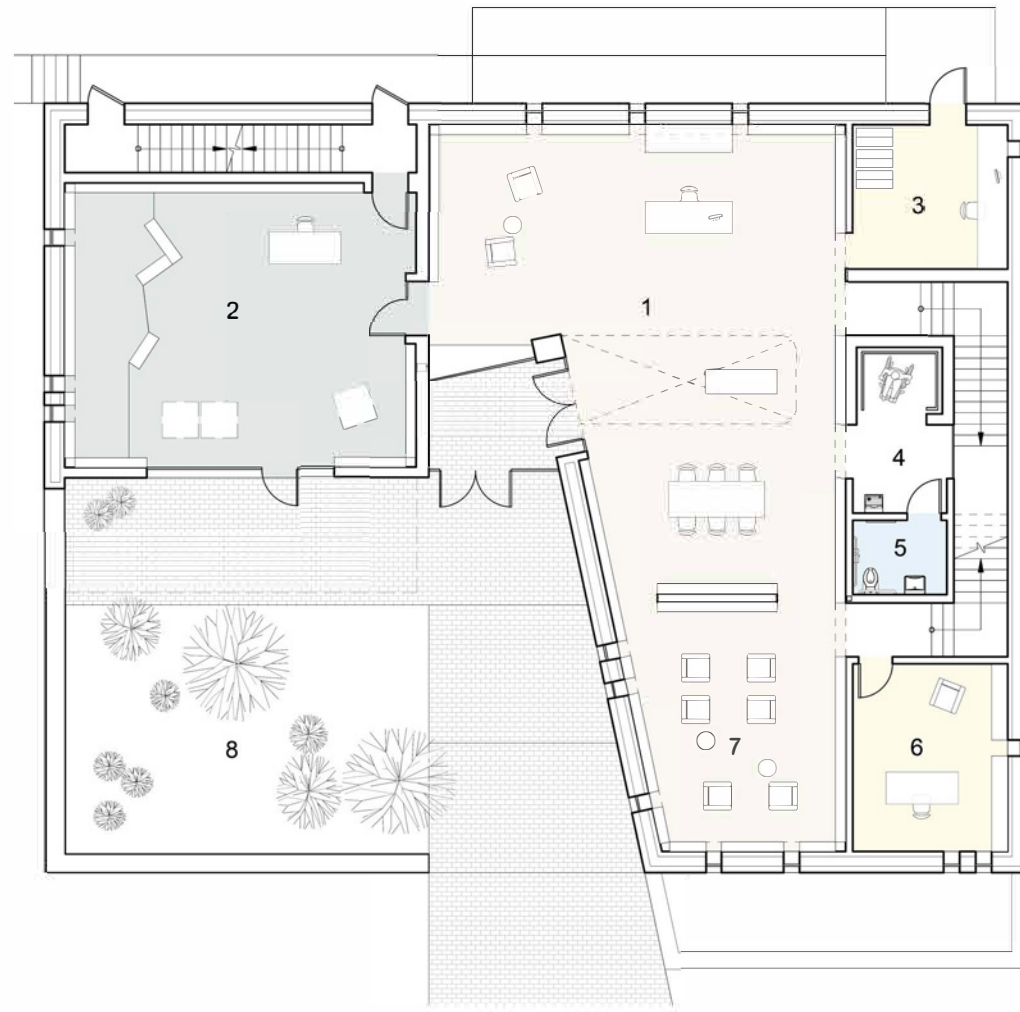
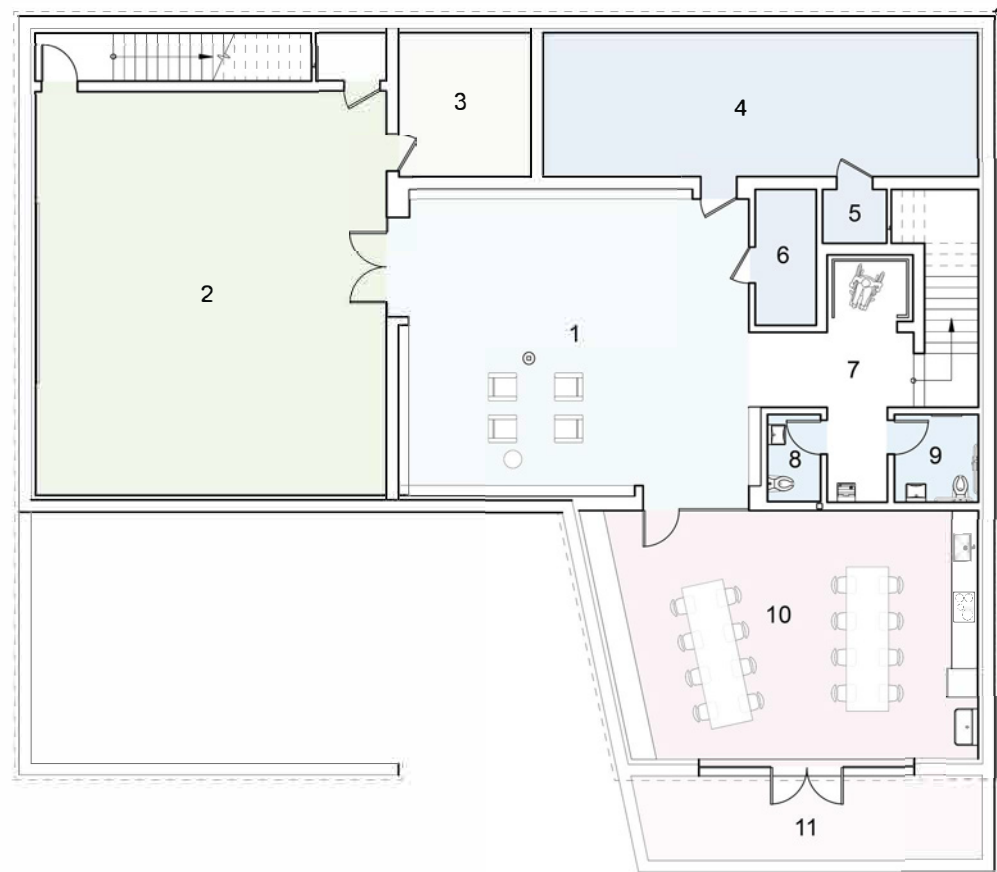
1 SCHEMATIC FIRST FLOOR PLAN  
Scale: 1/8" = 1'-0"

**NOTE:**  
ALL DRAWINGS ARE CONCEPTUAL FOR INFORMATION AND COMMUNITY FEEDBACK PURPOSES ONLY. THE DRAWINGS DO NOT REPRESENT THE FINAL DESIGN TO BE SUBMITTED TO THE TOWN OF STONY POINT BUILDING DEPARTMENT.



**1** SCHEMATIC SECOND FLOOR PLAN  
 Scale: 1/8" = 1'-0"

**NOTE:**  
 ALL DRAWINGS ARE CONCEPTUAL FOR INFORMATION AND COMMUNITY FEEDBACK PURPOSES ONLY. THE DRAWINGS DO NOT REPRESENT THE FINAL DESIGN TO BE SUBMITTED TO THE TOWN OF STONY POINT BUILDING DEPARTMENT.



**1** BASEMENT PLAN  
Scale: 1/16" = 1'-0"

- 1 Area for Program Spaces 640 SQ. FT. with Non Fiction Stacks, Reading Room
- 2 Multifunctional Space 984 SQ. FT. for Yoga, Tai Chi, Art Shows, Large Meetings, etc.
- 3 Table + Chair Storage 132 SQ. FT
- 4 Mechanical Room + Janitor's Room 412 SQ. FT
- 5 Janitor's Closet 25 SQ. FT.
- 6 IT Closet 57 SQ. FT.
- 7 Service Area 125 SQ. FT.
- 8 Non-Gendered WC 33 SQ. FT.
- 9 Non-Gendered Accessible WC 50 SQ. FT.
- 10 Project Room 643 SQ. FT.
- 11 Project Room Terrace 200 SQ. FT.

**2** FIRST FLOOR PLAN  
Scale: 1/16" = 1'-0"

- 1 Fiction Stacks, Reading Room 1,450 SQ. FT. + Welcome Area
- 2 Children's Library 667 SQ. FT.
- 3 Collections Librarian 155 SQ. FT
- 4 Service Area 70 SQ. FT
- 5 Non-Gendered Accessible WC 193 SQ. FT.
- 6 Staff Office 193 SQ. FT.
- 7 Quiet Reading Area 195 SQ. FT.
- 8 Courtyard Garden 948 SQ. FT.

**3** SECOND FLOOR PLAN  
Scale: 1/16" = 1'-0"

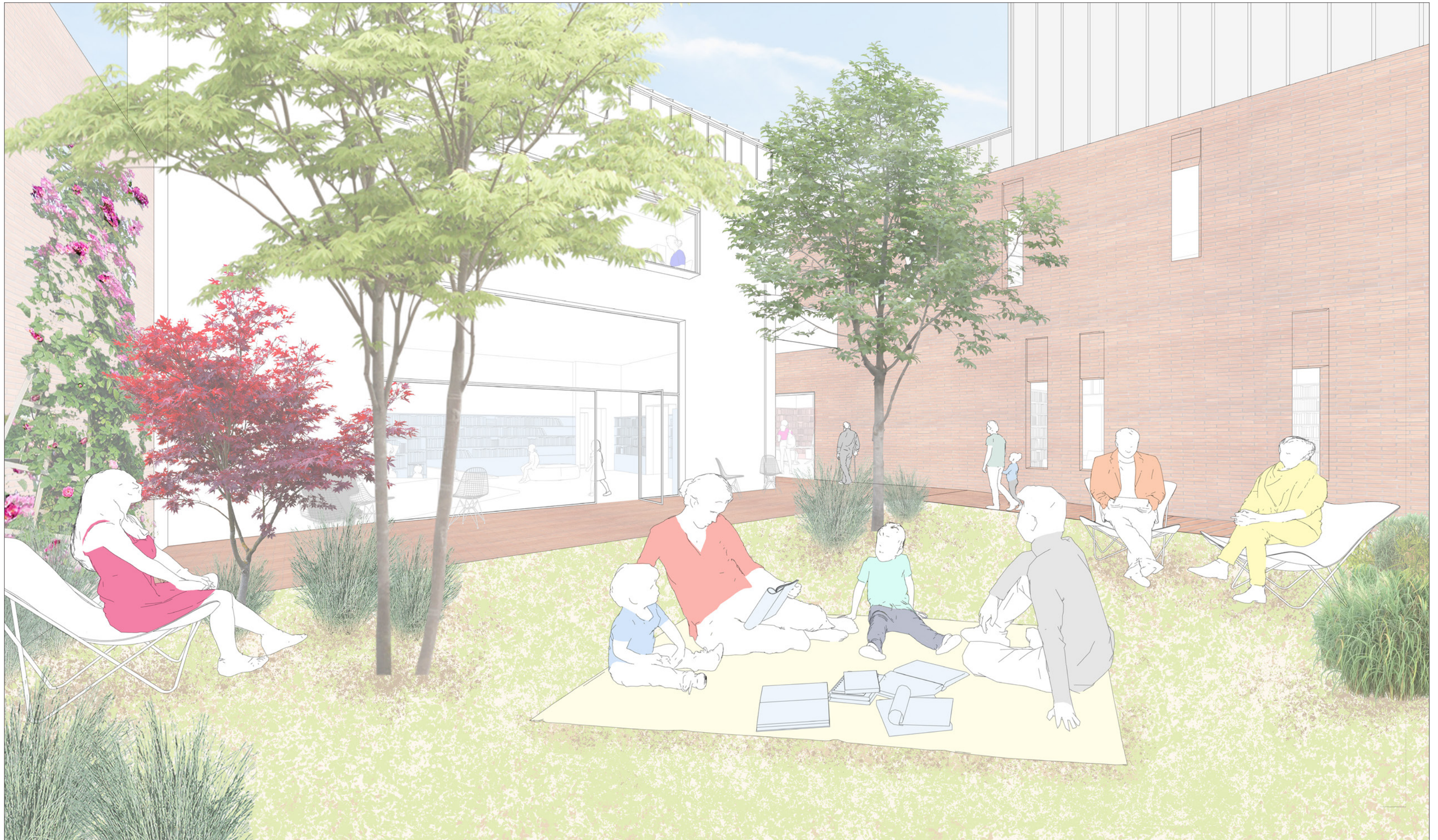
- 1 Teen Room 634 SQ. FT.
- 2 Study Room 180 SQ. FT.
- 3 Study Room/Meeting Room 148 SQ. FT
- 4 Staff Room 147 SQ. FT
- 5 Staff Office 217 SQ. FT.
- 6 Service Area 70 SQ. FT.
- 7 Director's Office 150 SQ. FT.
- 8 Non-Gendered Accessible WC 50 SQ. FT.
- 9 Stony Point History Room 657 SQ. FT.





**COURTYARD 1** View to the Entrance

Entering the Courtyard, a gently sloping ramp accessible to all welcomes visitors to the Rose Memorial Library.



**COURTYARD 2** View from the Courtyard to the Entrance

The courtyard garden is an essential outdoor room for the library: it becomes another reading room, a place for storytelling and social gatherings, or simply a calm place to enjoy.



**FICTION ROOM 1** View from the librarian's welcome desk toward the Entry

As you enter the library, you are greeted by a selection of new and notable books illuminated by natural light from above.



**FICTION ROOM 2** View to the fiction room and Entry

The stacks of books are arranged along the perimeter walls to maintain an open, flexible area with a visual connection between spaces.



**FICTION ROOM 3** View from the reading area

A quiet space where you can relax and read or study with a view of the Courtyard.



**CHILDREN'S LIBRARY ROOM 1** View looking towards the stage

The Children's Room is located on the library's ground floor and directly connects to the Courtyard Garden. To the west end of the room, a transformable stage is designed as a landscape. It creates two separate levels for activities. There are reading cubbies, space for performances, a play-based learning zone, and areas for gathering for storytime.



**CHILDREN'S LIBRARY ROOM 2** View to the Courtyard Garden / View looking towards the stage

A main feature of the room is the inside-outside connection for children to explore. The large opening allows plenty of natural light and a view of the Courtyard Garden's changing seasons.



**CHILDREN'S LIBRARY ROOM 3** View from the stage

The Children's library connects to the main lobby, the Courtyard Garden, and the flexible use meeting room directly below, where larger children's programs take place.





**TEEN ROOM 1** View looking towards the window seat and Courtyard

The Teen Room, located on the second floor, provides the teens with their own safe and supervised space to gather and relax.



**TEEN ROOM 2** View looking towards the window seat and Courtyard

The room offers areas for both group and individual study.



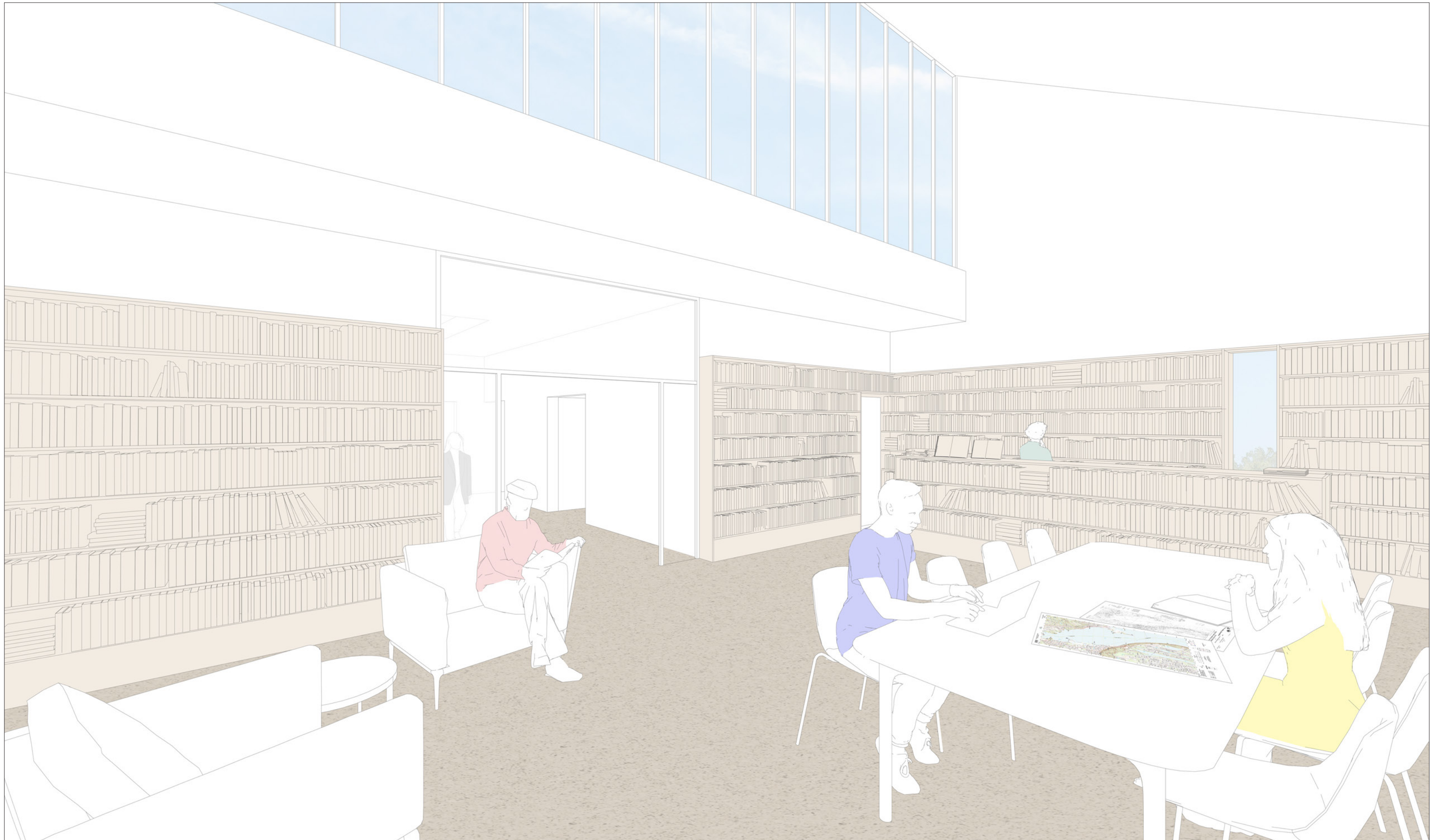
**TEEN ROOM 3** View looking towards the window seat and Courtyard

The bay window overlooks the Courtyard, becoming a sitting niche that encourages a collaborative atmosphere.



**STONY POINT HISTORY ROOM 1** View from within the collection

A large room dedicated to the rich history of Stony Point, the Hudson River, and the surrounding environment is a quiet wing on the second floor. The windows look out to the Courtyard Garden and to East Main Street.



**STONY POINT HISTORY ROOM 2** View toward elevator and stair

The north window provides natural light from above, illuminating the maps and archival material preserved in the collection.



**MODEL PHOTO 1** Aerial view from southwest corner, roof attached



**MODEL PHOTO 2** Aerial view from southwest corner, roof removed



**MODEL PHOTO 3** View from southwest corner



**MODEL PHOTO 4** View southeast corner



MODEL PHOTO 5 View from East Main Street