

A COMMUNITY GATHERING PLACE | ROSE MEMORIAL LIBRARY



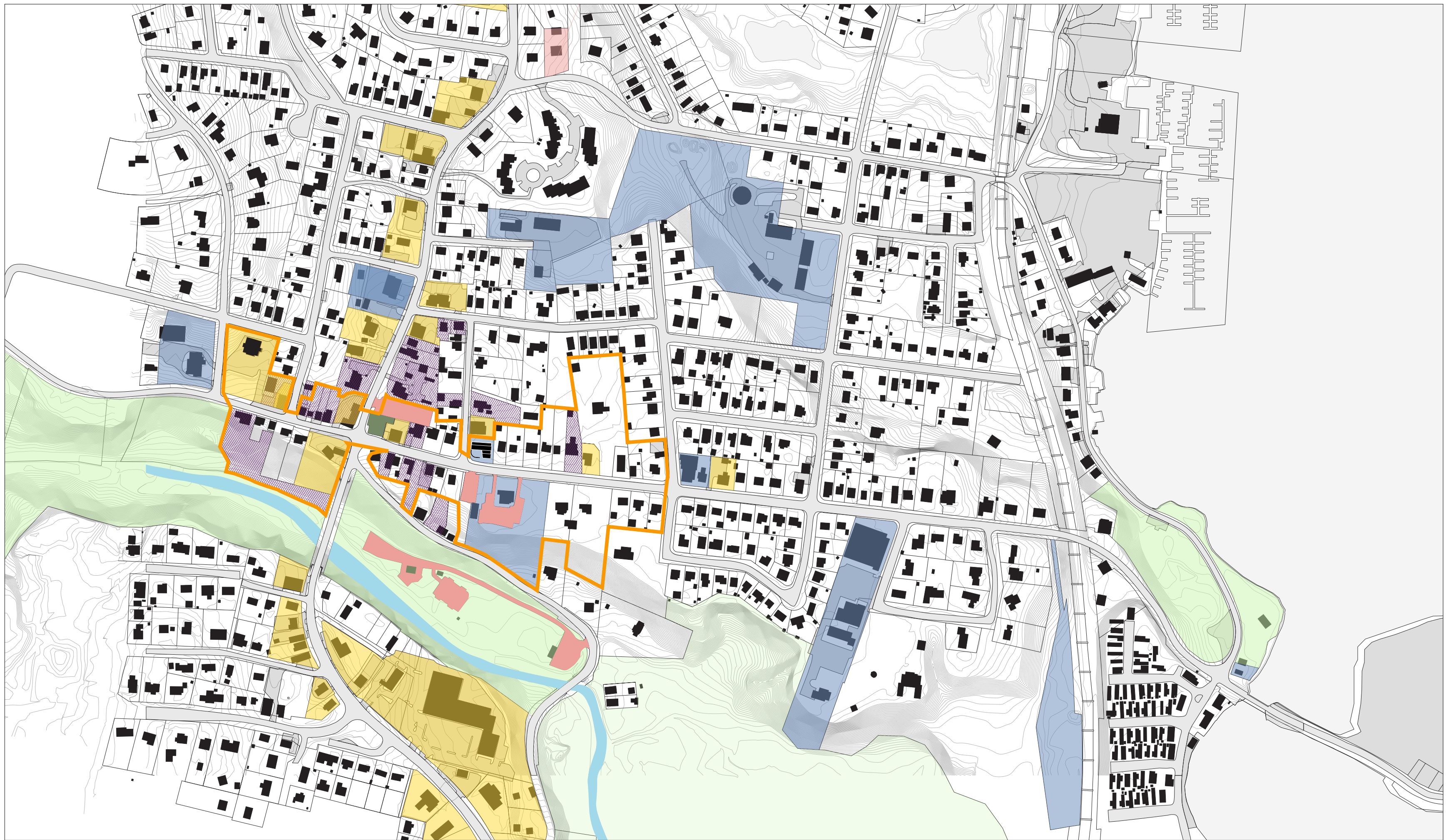


TOWN CENTER

As defined in the Town of Stony Point 2013 Amendment to the 1995 Master Plan.



MAIN STREET ELEVATION



- COMMERCIAL USE
- COMMUNITY USE OR SERVICE
- PARK
- MUNICIPAL PARKING LOT
- MULTI-FAMILY RESIDENCE
- MIXED USE, COMMERCIAL AND RESIDENTIAL
- TOWN CENTER

EXTENDED SITE PLAN

Showing a mix of zoning uses in and around the area.



▨ NON-CONFORMING LOT AREA IN ZONING DISTRICT R1
 EXISTING PARCEL
 REQUIRED PARCEL SIZE FOR USE GROUP (f) IN ZONING DISTRICT (R1)

NON - CONFORMING LOT AREA

Demonstrating the extent of “non-conforming lots” in the area.



ESTABLISHED SETBACK
 35' SETBACK IN ZONING DISTRICT (R1)
 100' SETBACK IN USE GROUP (f)

SETBACKS

Setback required by zoning in contrast with the town’s established setback.



- MUNICIPAL PARKING LOT
- PRIVATE LOT and POTENTIAL PARTNER
- PRIVATE LOT
- TWO SIDED STREET PARKING
- ONE SIDED STREET PARKING
- 2.5 MINUTE WALK
- 5 MINUTE WALK

PARKING PLAN

All parking opportunities within appropriate walking distances of the site.



MUNICIPAL PARKING LOT PRIVATE LOT and POTENTIAL PARTNER PRIVATE LOT PROPOSED HANDICAP PARKING TWO SIDED STREET PARKING ONE SIDED STREET PARKING PARCELS BORDERING STREET PARKING

PARKING PLAN CLOSE-UP
 Parking available adjacent to the site.

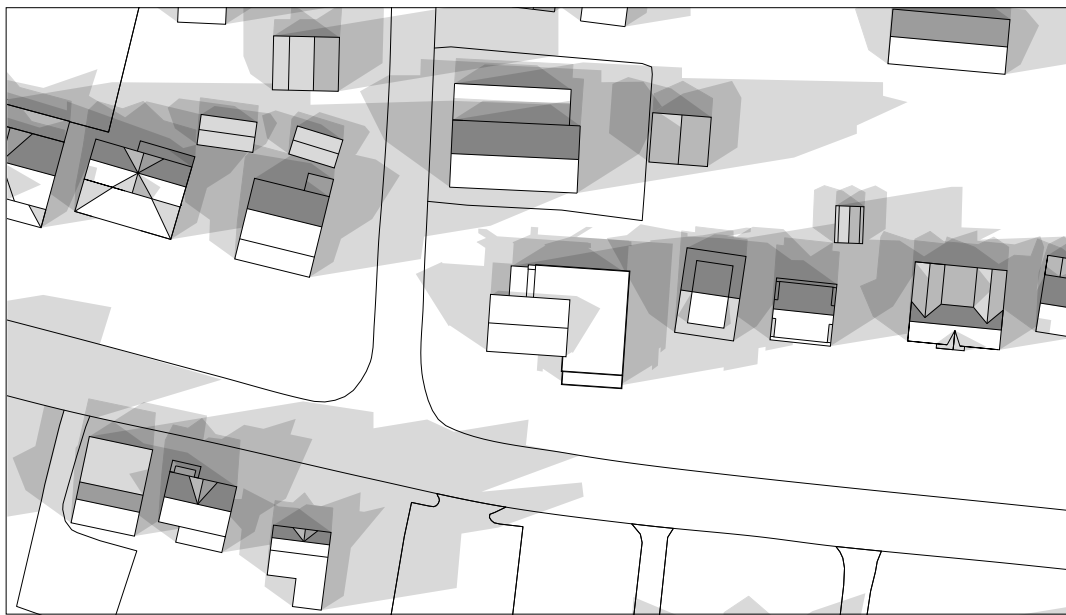


MUNICIPAL PARKING LOT PRIVATE LOT and POTENTIAL PARTNER PRIVATE LOT HANDICAP PARKING ONE SIDED STREET PARKING PARCELS BORDERING STREET PARKING

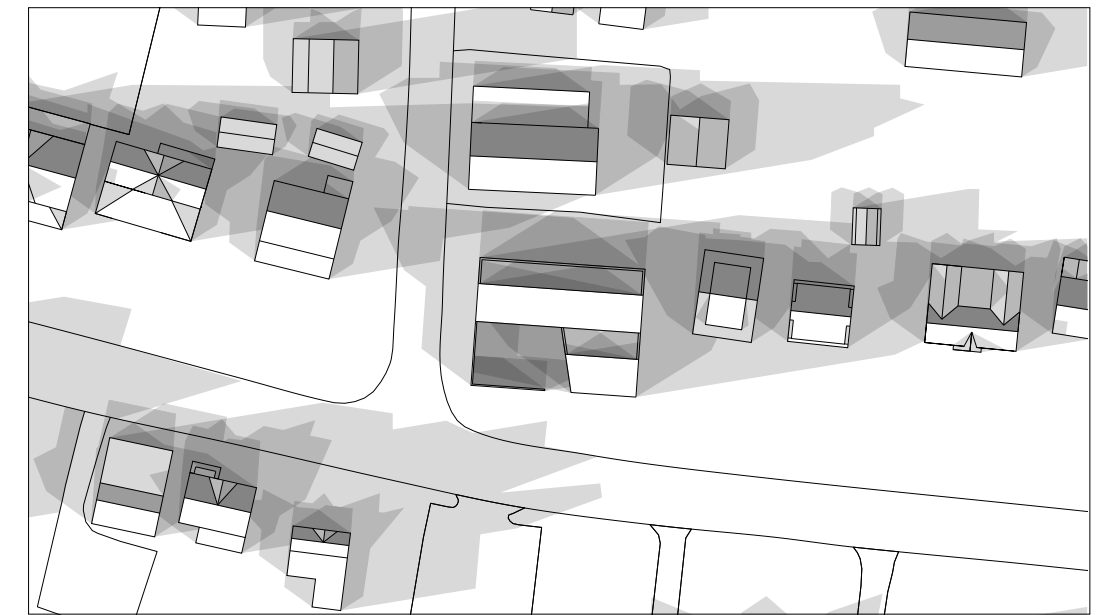
SITE ADJACENT PARKING
 On-site, off-site and public and private parking located adjacent to the library.



summer solstice



equinox

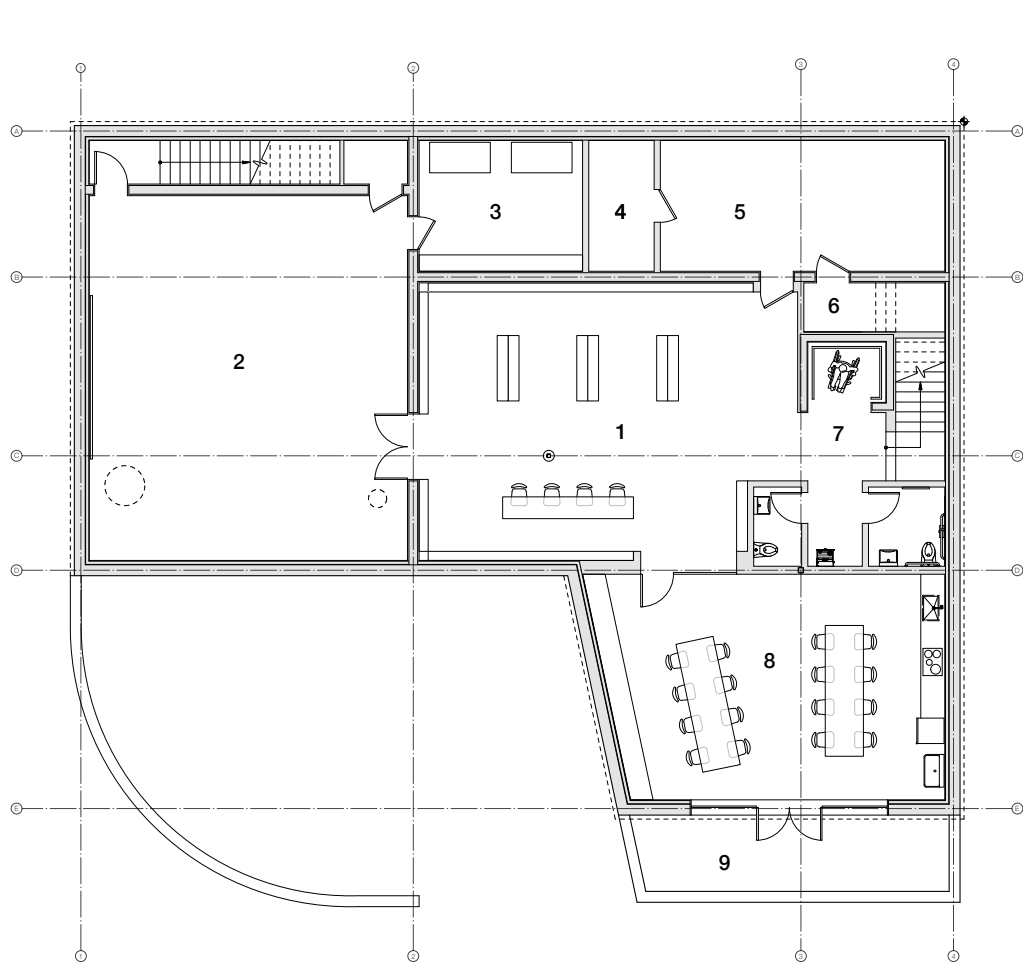


winter solstice



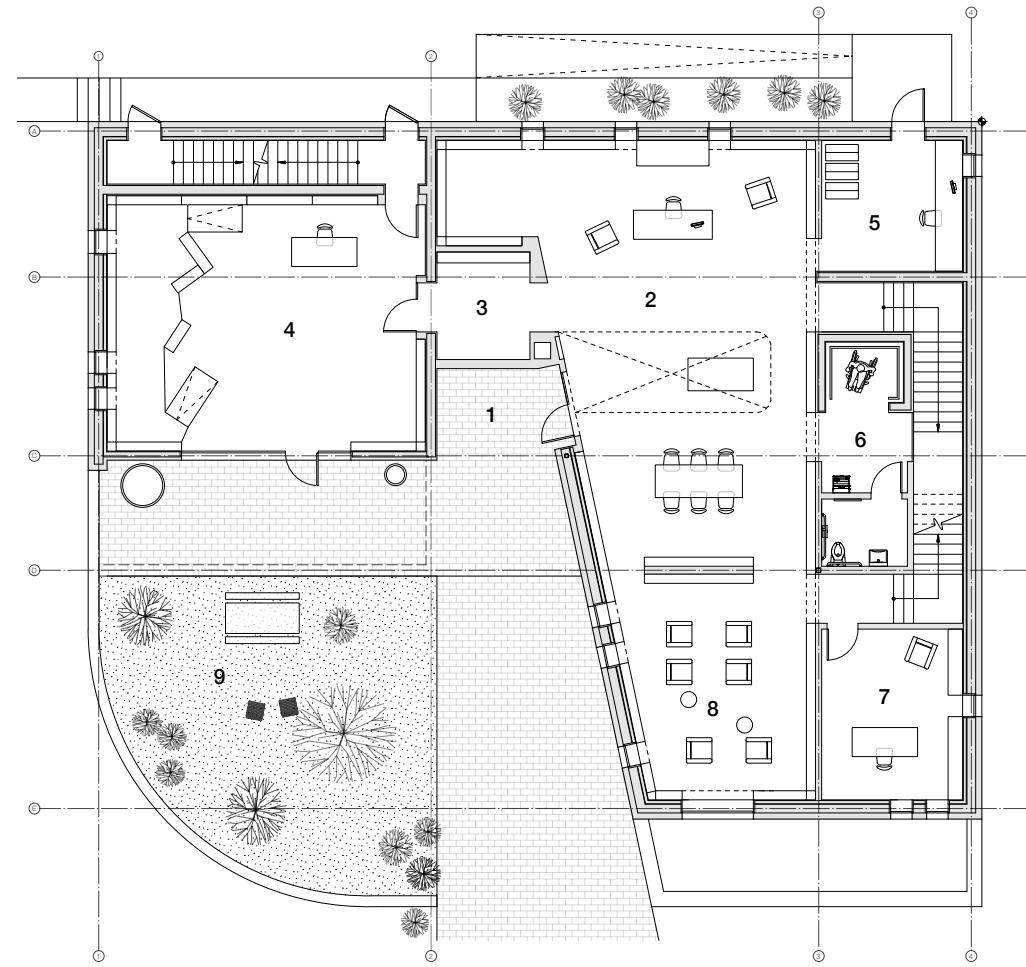
SHADOWS CAST BY EXISTING LIBRARY

SHADOWS CAST BY PROPOSED LIBRARY



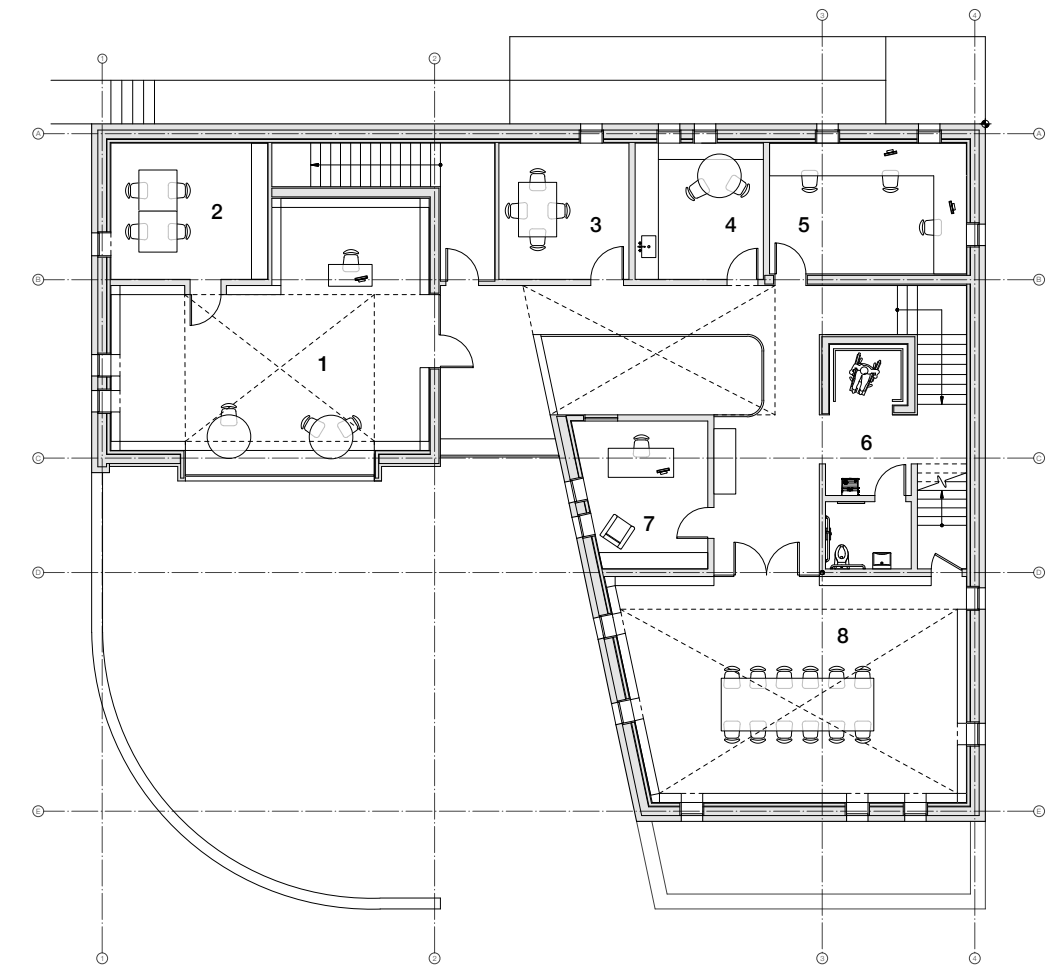
1 BASEMENT PLAN

- 1 Non-Fiction Stacks 000-699 and Future Tool Library 640 sq. ft.
- 2 Multi-Functional Space for Community Meeting, Movies, Yoga 1,065 sq. ft.
- 3 Table + Chair Storage, Children's Programming Storage 137 SQ. FT
- 4 IT Room 72 sq. ft.
- 5 Mechanical Room + Storage 314 sq. ft.
- 6 Janitor's Closet 58 sq. ft.
- 7 Service Area
Non-Gendered Accessible WC + Water Bottle Filler
- 8 Project Room 634 sq. ft.
- 9 Project Room Terrace 200 sq. ft.



2 FIRST FLOOR PLAN

- 1 Entry with Book Drop
- 2 Fiction Stacks, Reading Room + Welcome 1,450 sq. ft.
- 3 Children's Vestibule with Stroller Parking + Cubbies
- 4 Children's Room 667 sq. ft.
- 5 Collections Librarian + Sorting 155 sq. ft.
- 6 Service Area
Non-Gendered Accessible WC + Water Bottle Filler
- 7 Staff Office 193 sq. ft.
- 8 Quiet Reading Area
- 9 Courtyard Reading Area



3 SECOND FLOOR PLAN

- 1 Teen Room + Teen Librarian 634 sq. ft.
- 2 Study Room 180 sq. ft.
- 3 Study Room/ Small Meeting Room 148 sq. ft.
- 4 Staff Room 147 sq. ft.
- 5 Staff Office 217 sq. ft.
- 6 Service Area
Non-Gendered Accessible WC + Water Bottle Filler
- 7 Director's Office 150 sq. ft.
- 8 Stony Point History Room, Non-Fiction Stacks 700-999 + Meeting Room 657 sq. ft.

FLOOR PLANS



EAST MAIN STREET VIEW

From the street, the courtyard garden is screened-in by a porous brick wall. Large windows invite the public into the space. Native plants line the exterior walls creating a welcoming landscape, and blending the library's exterior with its neighboring yards.



ENTRANCE COURTYARD View from the entrance into the courtyard.

Entering the courtyard, a gently sloping ramp accessible to all welcomes visitors to the Rose Memorial Library. The courtyard garden is an essential outdoor room for the library. It becomes another reading room, a place for storytelling and social gatherings, or simply a calm place to enjoy.



ENTRANCE LOBBY View from the reception to the entrance.

As you enter the library, you are greeted by a selection of new and notable books illuminated by natural light from above. The stacks of books are arranged along the perimeter walls to maintain an open, flexible area with a visual connection between spaces.



CHILDREN'S ROOM

The Children's Room is located on the library's ground floor and directly connects to the Courtyard Garden, creating an inside-outside connection for children to explore, and allowing plenty of natural light into the space. To the west end of the room, a transformable stage is designed as a landscape, creating two separate levels for activities. There are reading cubbies, space for performances, a play-based learning zone, and gathering areas for storytime.



TEEN ROOM

The Teen Room, located on the second floor, provides the teens with their own safe and supervised space to gather and relax. The bay window overlooks the Courtyard, becoming a collective sitting niche that encourages a collaborative atmosphere. A quiet study room and an area for the teen librarian are also incorporated with in the room.



HISTORY ROOM

The history room holds the Stony Point archive, along with the Library's Non-fiction, Arts, Literature, Geography and History collections. It is also used as a meeting room. Situated under a large skylight, this room is flooded with natural light. Its location apart from the main library spaces allows for a quiet study experience.



NON - FICTION / TOOL LIBRARY View into the basement space.

The lower level of the library is home the non-fiction stacks, including science and technology, the future Tool Library, and the large multi-purpose room with space for community gatherings.